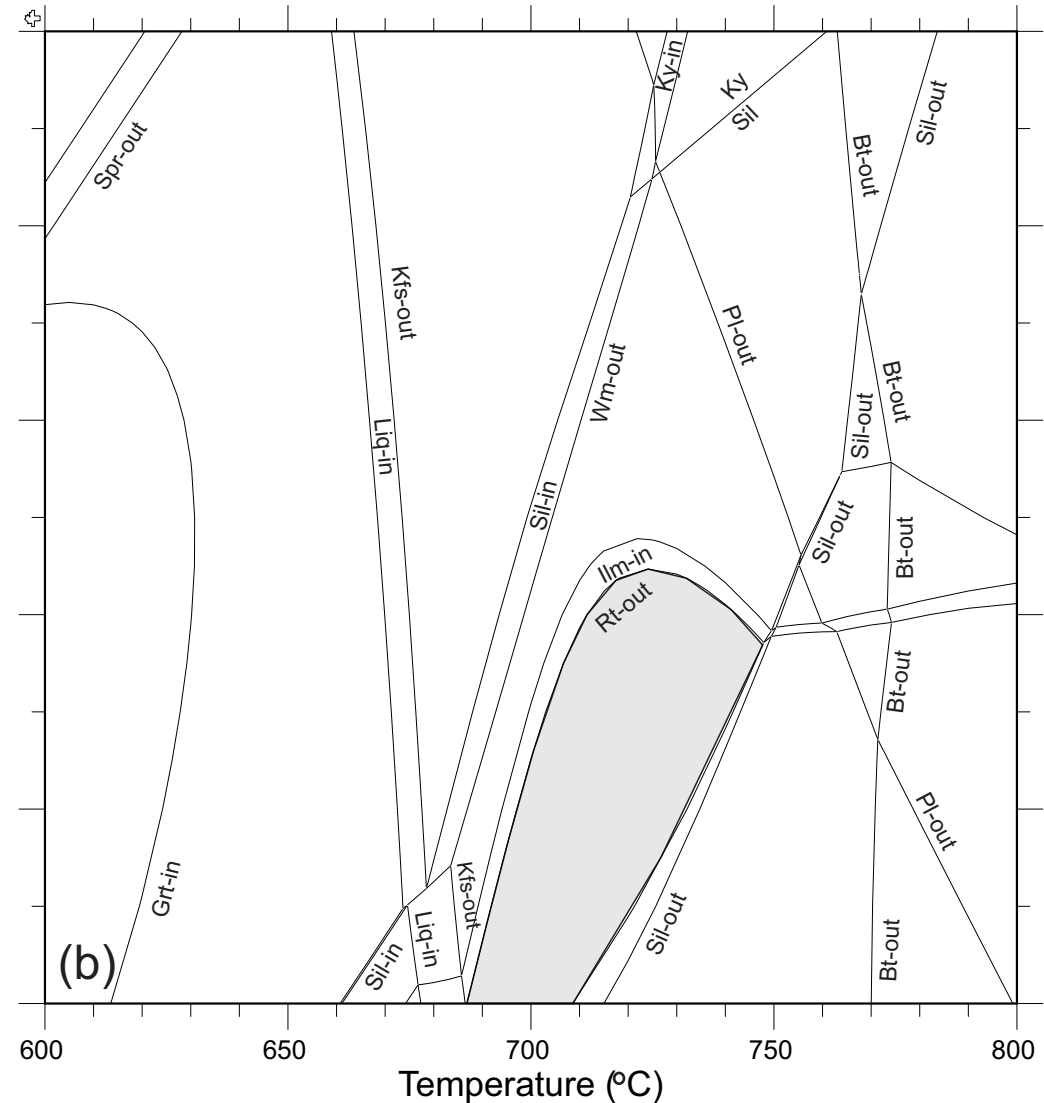
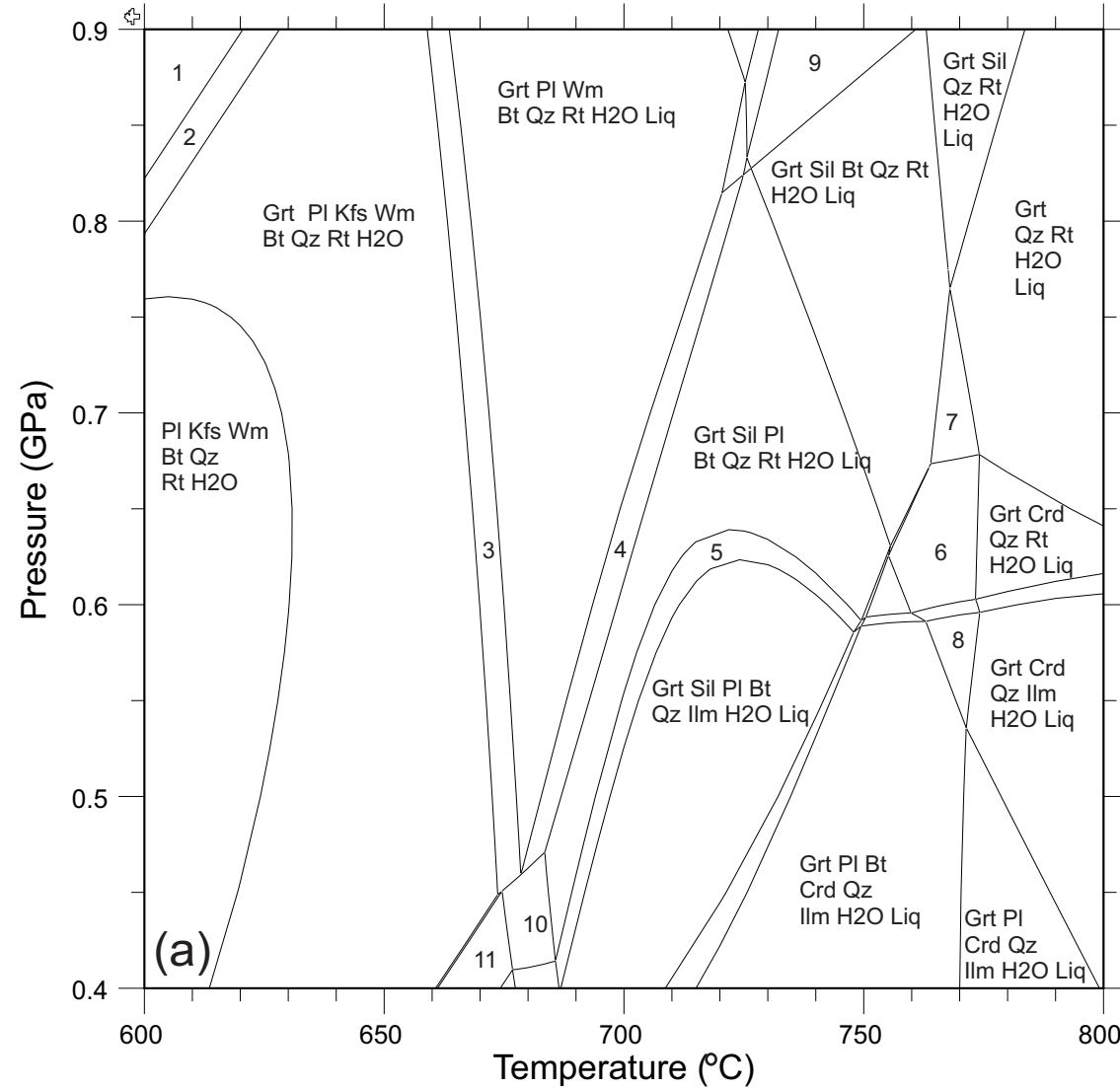


Bulk(1)= Si(68.42)Al(13.86)Fe(2.56)MG(1.39)CA(0.93)NA(2.76)K(4.87)TI(0.33)MN(0.07)H(100)O(?)

Bulk(1)= Si(68.42)Al(13.86)Fe(2.56)MG(1.39)CA(0.93)NA(2.76)K(4.87)TI(0.33)MN(0.07)H(100)O(?)



1: Grt Pl Kfs Wm Bt Qz Spr H2O 2: Grt Pl Kfs Wm Bt Qz Spr Rt H2O 3: Grt Pl Kfs Wm Bt Qz Rt H2O Liq 4: Grt Sil Pl Wm Bt Qz Rt H2O Liq 5: Grt Sil Pl Bt Qz Rt Ilm H2O Liq  
6: Grt Bt Crd Qz Rt H2O Liq 7: Grt Bt Qz Rt H2O Liq 8: Grt Bt Qz Ilm H2O Liq 9: Grt Ky Bt Qz Rt H2O Liq 10: Grt Sil Pl Kfs Bt Qz Rt H2O Liq 11: Grt Sil Pl Kfs Bt Qz Rt H2O

