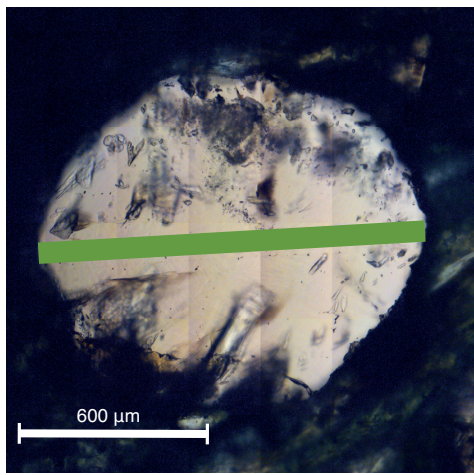
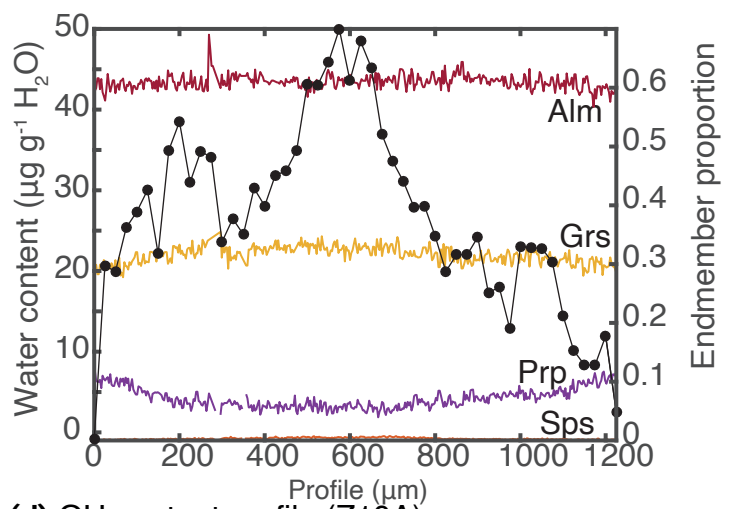


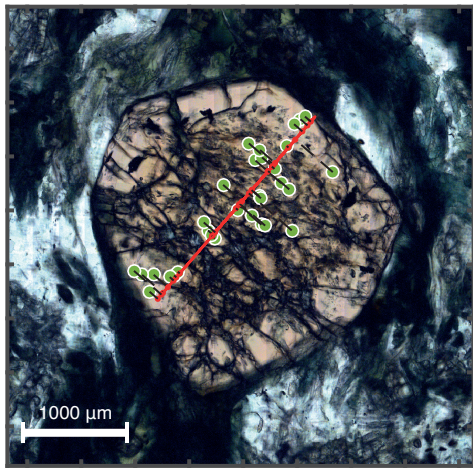
(a) Optical image (Z18TB15)



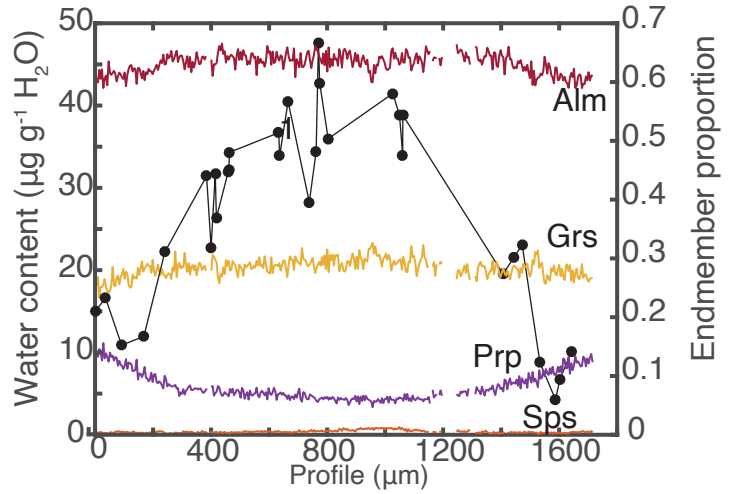
(b) OH content profile (Z18TB15)



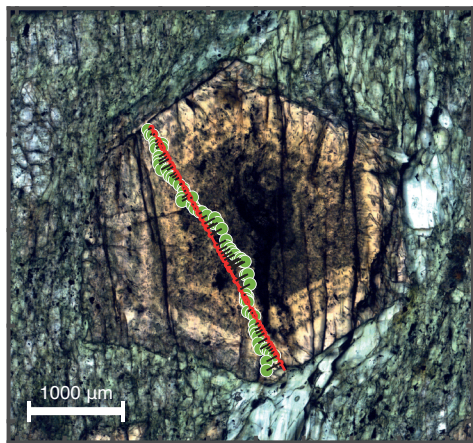
(c) Optical image (Z10A)



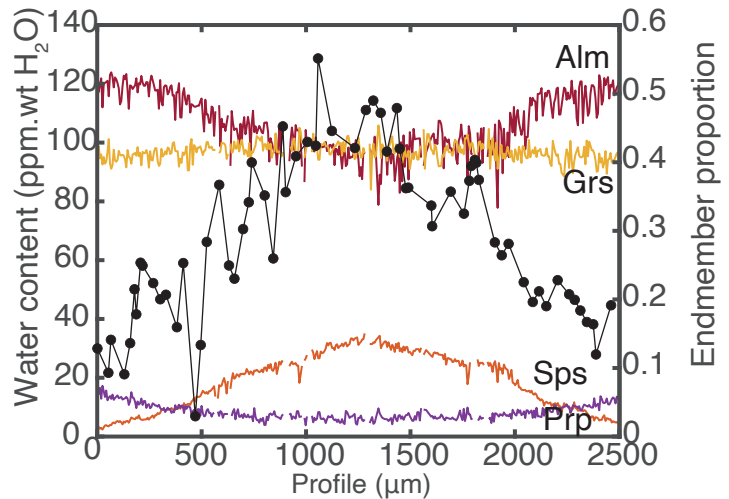
(d) OH content profile (Z10A)



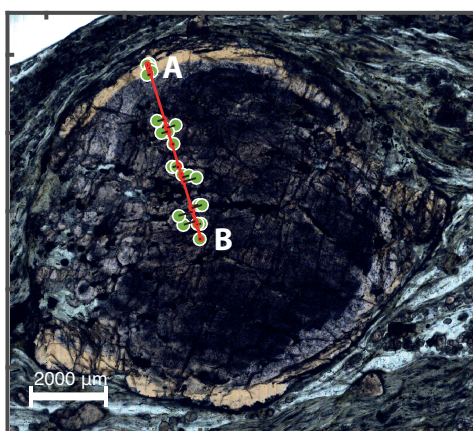
(e) Optical image (Z17TB07)



(f) OH content profile (Z17TB07)



(g) Optical image (Z17TB03A)



(h) OH content profile (Z17TB03A)

