



Supplement of

**Supergene phases from ferruginous duricrusts:
non-destructive microsampling and mineralogy prior to
(U–Th) / He geochronological analysis**

Karina P. P. Marques et al.

Correspondence to: Karina P. P. Marques (karina.marques@alumni.usp.br)

The copyright of individual parts of the supplement might differ from the article licence.

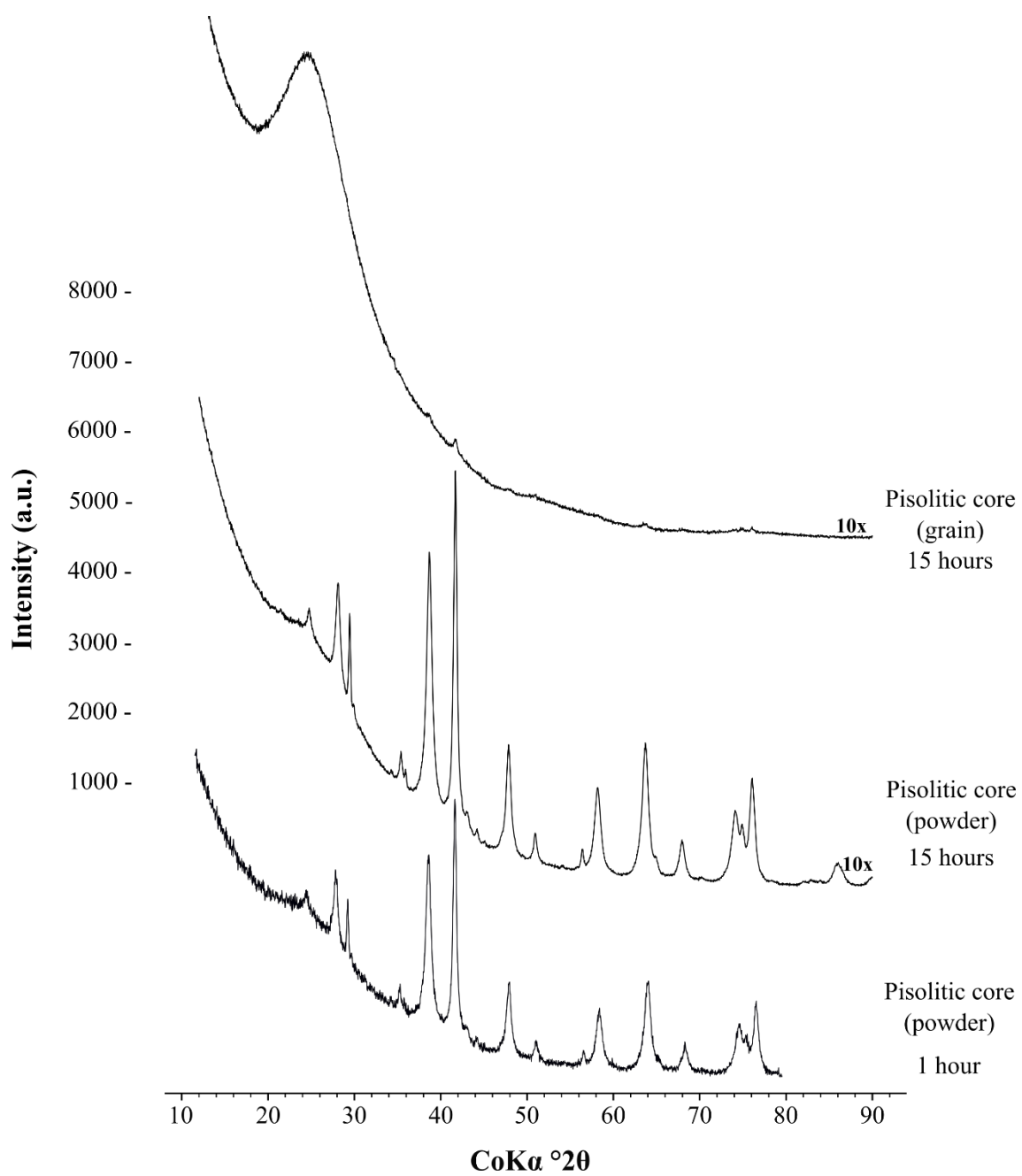


Figure S1: Standard XRD patterns with different exposure times for grain and powder samples loaded in borosilicate capillaries from the pisolitic core of the ferruginous duricrust.

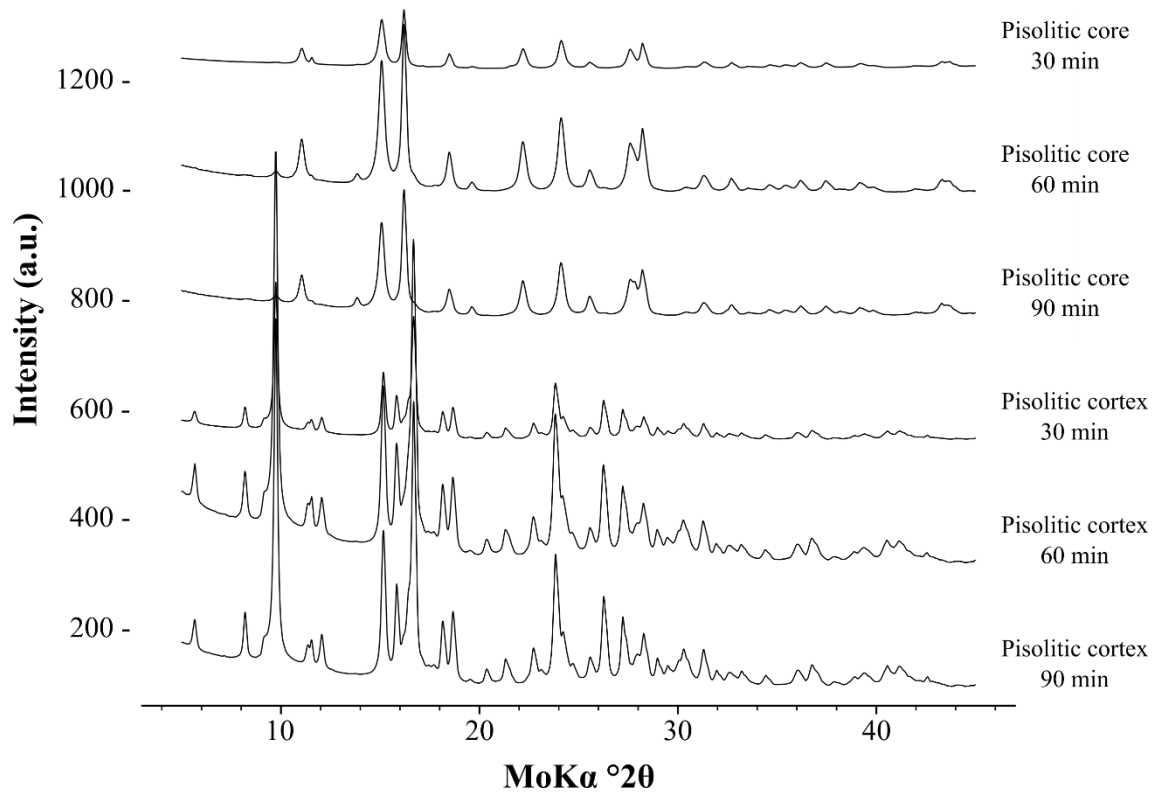


Figure S2: Rotating anode XRD patterns with different exposure times for grain samples from the pisolitic core and cortex of the ferruginous duricrust.