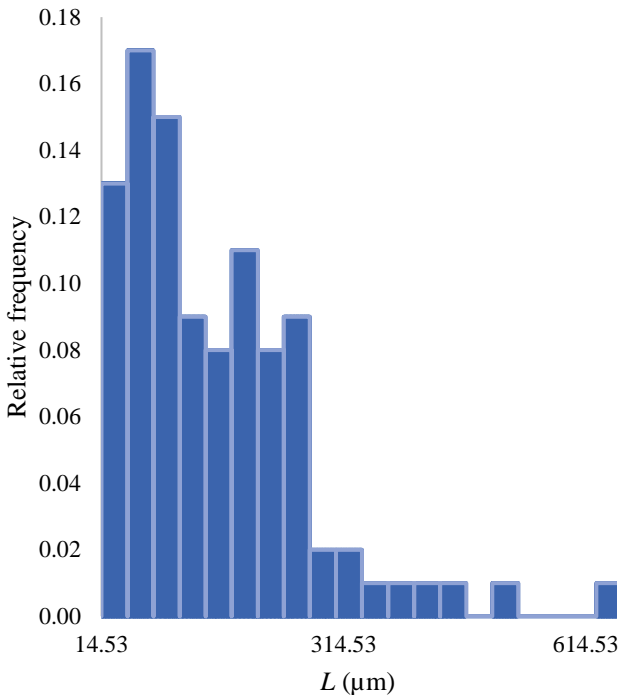


# Histogram ( $L$ )



Lower limit	Upper limit	Frequency	Relative frequency
14.53	46.80	13.00	0.13
46.80	79.08	17.00	0.17
79.08	111.35	15.00	0.15
111.35	143.62	9.00	0.09
143.62	175.90	8.00	0.08
175.90	208.17	11.00	0.11
208.17	240.44	8.00	0.08
240.44	272.72	9.00	0.09
272.72	304.99	2.00	0.02
304.99	337.27	2.00	0.02
337.27	369.54	1.00	0.01
369.54	401.81	1.00	0.01
401.81	434.09	1.00	0.01
434.09	466.36	1.00	0.01
466.36	498.63	0.00	0.00
498.63	530.91	1.00	0.01
530.91	563.18	0.00	0.00
563.18	595.45	0.00	0.00
595.45	627.73	0.00	0.00
627.73	660.00	1.00	0.01