

Supplement of Eur. J. Mineral., 32, 67–75, 2020
<https://doi.org/10.5194/ejm-32-67-2020-supplement>
© Author(s) 2020. This work is distributed under
the Creative Commons Attribution 4.0 License.



European Journal of
Mineralogy



Open Access

Supplement of

Raman spectroscopic identification of cookeite in the crystal-rich inclusions in spodumene from the Jiajika lithium pegmatite deposit, China, and its geological implications

Xin Ding et al.

Correspondence to: Jiankang Li (li9968@126.com)

The copyright of individual parts of the supplement might differ from the CC BY 4.0 License.

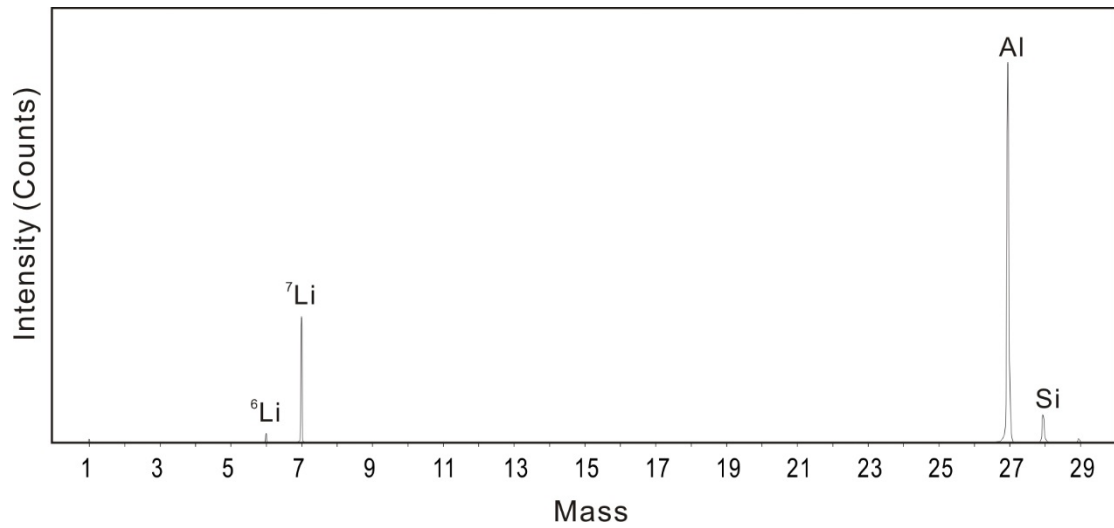


Figure S1. ToF-SIMS spectrum of one hydrous solid phase (cookeite) in one CI-hosted in spodumene from Jiajika pegmatite, marked with the elements corresponding to the peaks. There are two isotopes of lithium: ${}^6\text{Li}$ and ${}^7\text{Li}$.